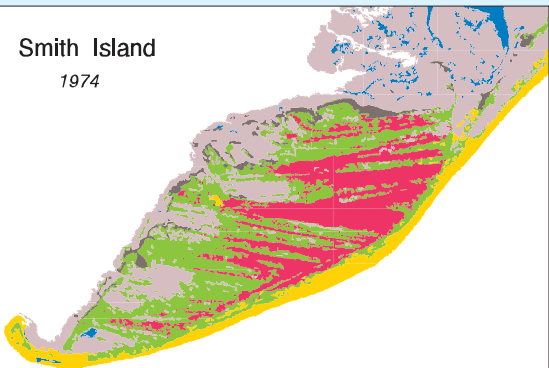


# Range Expansion of Shrub Thickets on Virginia Barrier Islands

Smith Island

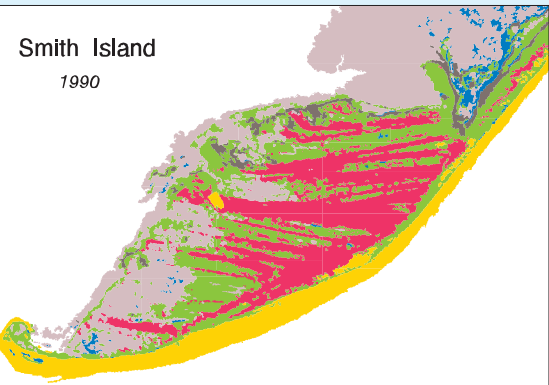
1974



Shrub thicket is a major vegetation type on barrier islands. False color aerial photographs were used to generate vegetation databases for three barrier islands of Virginia. GIS packages ERDAS & ARC/INFO were used to interpret the aerial photographs and to analyze shrub distributions. Two common features for the shrub spreading on the three islands have been identified: 1) the island portion where shrub thickets were spreading is wider than before, and 2) 95 percent of new shrub thickets were regenerated from where dense grasses had been previously distributed.

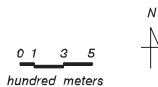
Smith Island

1990



## LEGEND

- Shrub Thicket
- Dense Grass
- Sparse / Sand
- S / F Marsh
- High Marsh
- M / S Flat
- Water



## VCR - LTER

G. Shao, H.H. Shugart  
J.H. Porter, D.R. Young

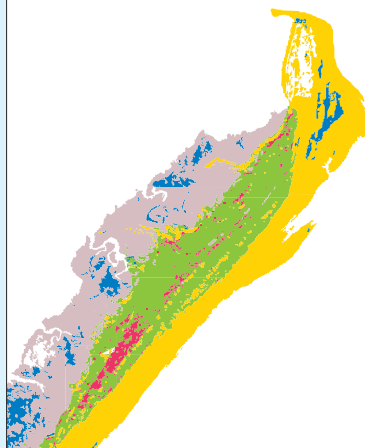


UVA

Sept. 1993

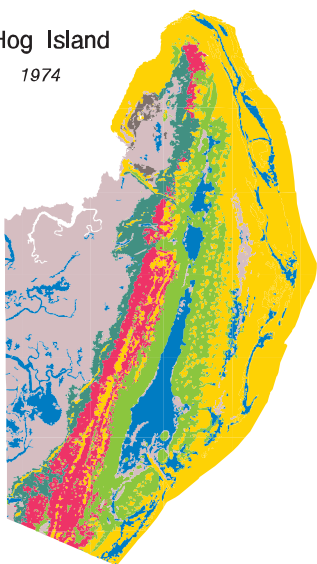
Cobb Island

1974



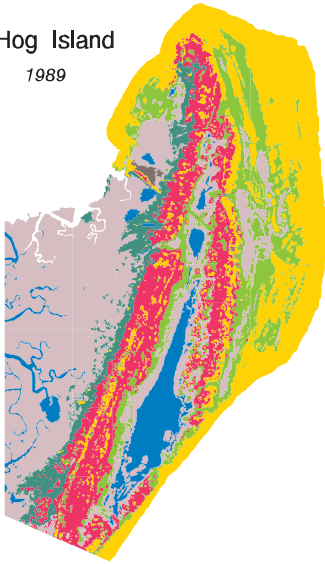
Hog Island

1974



Hog Island

1989



Cobb Island

1990

